



VALVE-REGULATED
SEALED LEAD
ACID BATTERY



E-TREK

RGT Series

DZM Series

D M Series

AGM Motive Power
Block Batteries

Product Guide



E-TREK



ABT E-TREK **RGT/DZM /DM Series**

Introduction

The ABT E-trek RGT, DZM and DM are ranges of block batteries for all applications in traction, from cleaning machines to pallet trucks, industrial electric vehicles etc. as well as some domestic applications like electric bicycle, wheelchairs, golf carts, electric vehicle, etc. RGT, DZM and DM are gas recombination batteries.

Charge

Both ranges can be recharged with battery chargers. Our chargers are equipped with microprocessors and ensure a reliable full recharge for any degree of discharge of the battery(max 80%). These chargers have an electronically regulated characteristic charging curve. Charging process is automatically controlled and terminated. All chargers are protected against overload and short circuit.

Operation

To achieve optimal operating life avoid deep discharges. Never leave the battery in a discharged state. Valve regulated batteries with absorbed electrolyte(AGM)are sealed for life and need no watering.

Installation

Battery monoblocs should be installed in accordance with the instructions from vehicles/trucks manufacturers (respect of polarity for the connection, and mechanically robust installation). While operating on battery connections avoid short circuits.

Storage

If batteries have to be stored out of service for a long time, they must be kept fully charged in a dry, clean and frost free zone. A monthly refreshing charge avoids any harmful deep discharge and damage to the battery.

Maintenance

Keep batteries clean and dry to avoid current leakage. Clean the monoblocs with a damp cotton rag. Never use any organic solution!

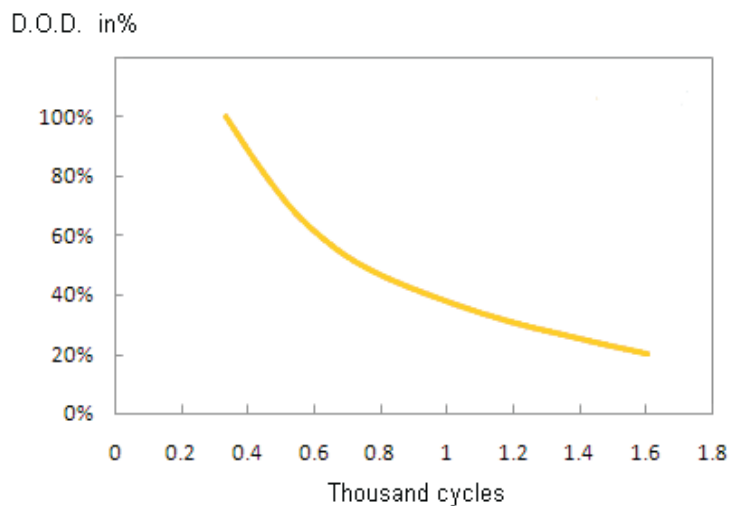
Operation and maintenance instructions for each product range should always be observed.



RGT Series

Products Characteristics

Cycle life vs depth of discharge



- Designed for cycling applications:
50%DOD 700 cycles(20°C)
- High specific energy
- Good cycling performance and over-discharging recovery performance
- Low self-discharged rate: $\leq 3\%$ (20°C) monthly on average
- Safety and reliable leakage-proof performance
- Easy installation and handling
- Operating in wide ambient temperature range: $-15^{\circ}\text{C} \sim 45^{\circ}\text{C}$

General Specifications

Battery Type	Nominal Voltage (V)	Nominal Capacity @1.75Vpc/20°C		Dimension				Weight (Kg)	Maximum Current 20°C		Internal Impedance 20°C Mohm	Terminal Type	Terminal layout
		C ₂₀ /Ah	C ₅ /Ah	Length (mm)	Width (mm)	Height (mm)	Overall Height with Poles (mm)		In 1min (A)	In 1sec (A)			
RGT12-7	12	7	6.02	151	65	93	98	2.4	120	400	22	F1 or F2	C
RGT12-12	12	12	10.32	151	98	94	100	3.6	120	400	16	F1 or F2	C
RGT12-18	12	18	15.48	181	76	166	166	5.9	120	400	15	M5xØ12	B
RGT12-27	12	27	23.22	166	175	125	125	8.5	150	400	11.7	M6xØ12	B
RGT12-33	12	33	28.38	195	129	158	163	11.5	150	400	7.35	M6xØ12	A
RGT12-42	12	42	36.12	196	165	176	176	13.9	200	500	7.14	M6xØ16	B
RGT12-55	12	55	47.3	229	138	208	213	18.5	300	600	5.1	M6xØ16	A
RGT12-70	12	70	60.2	258	168	207	212	25	300	600	4.42	M6xØ16	A
RGT12-80	12	80	68.8	350	167	179	179	26	400	700	4.95	M6xØ16	A
RGT12-90	12	90	77.4	304	168	208	213	30.5	500	800	3.98	M6xØ16	A
RGT12-100	12	100	83.89	329	172	216	223.5	33.2	500	800	4	M8xØ18	A
RGT12-150	12	150	125.83	485	172	240	240	49.5	500	800	3.2	M8xØ17	A



Utility



Golf carts



Golf caddies



Boats



Cleaning



Walkies



Access



Wheel-chairs



Advanced guided vehicles

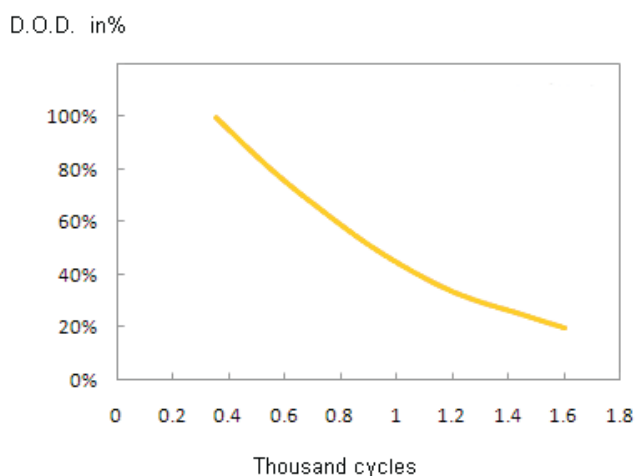


Electric cars

DZM series

Products Characteristics

Cycle life vs depth of discharge



1. Designed for cycling applications: 100%DOD 350 cycles(20°C)
2. High products consistency
3. Low rate of self-discharge: $\leq 3\%$ (20°C) monthly on average
4. High cycling and over-discharging recovery performance
5. Safety and reliable leakage-proof performance
6. Easy installation and handling
7. Operating in wide ambient temperature range: -20°C~50°C

General Specifications

Battery Type	Nominal Voltage (V)	Nominal Capacity 1.75v/20°C		Dimension				Weight (Kg)	Maximum Current 20°C		Internal Impedance 20°C Mohm	Terminal Type	Terminal layout
		C ₂₀ /Ah	C ₂ /Ah	Length (mm)	Width (mm)	Height (mm)	Overall Height with Poles (mm)		In 1min (A)	In 1sec (A)			
6-DZM-6	12	8.5	6	151	65	93	98	2.6	48	180	18	F2	C
6-DZM-10	12	13.5	10	151	98	94	97	4.17	80	300	10	M5×φ8	C
6-DZM-12A	12	14	12	151	99	94	97	4.3	96	360	9.8	M5×φ8	C
6-DZM-12B	12	14	12	151	99	97	100	4.45	96	360	9.8	M5×φ8	C
6-DZM-16	12	20	16	151	99	117	123	5.5	128	480	8.5	F2	C
6-DZM-17	12	22	17	181	77	170	170	6.25	136	510	9.7	M5×φ10	B
6-DZM-20	12	25	20	181	77	170	170	6.95	160	600	9.3	M5×φ10	B
6-DZM-32	12	45	32	196	165	176	176	15	256	960	8	M5×φ16	B



Utility



Golf carts



Golf caddies



Boats



Cleaning



Walkies



Access



Wheel-chairs



Advanced guided vehicles

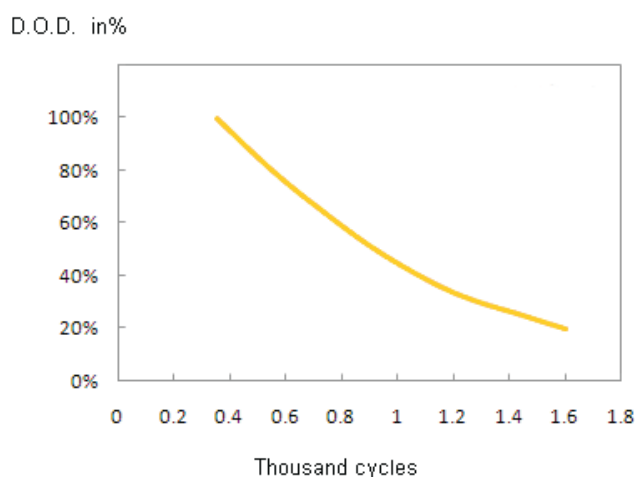


Electric cars

DM series

Products Characteristics

Cycle life vs depth of discharge



1. Designed for cycling applications:100%DOD 300 cycles(20°C)
2. High cycling and over-discharging recovery performance
3. Good charging performance
4. High products consistency
5. Low rate of self-discharge:≤3%(20°C)monthly on average
6. Safety and reliable leakage-proof performance
7. Easy installation and handling
8. Operating in wide ambient temperature range:-20°C~50°C

General Specifications

Battery Type	Nominal Voltage (V)	Nominal Capacity 1.75v/20°C		Dimension				Weight (Kg)	Maximum Current 20°C		Internal Impedance 20°C Mohm	Terminal Type	Terminal layout
		Ah/5h	Ah/20h	Length (mm)	Width (mm)	Height (mm)	Overall Height with Poles (mm)		In 1min (A)	In 1sec (A)			
3-DM-185	6	225	185	260	180	245	253	30	555	2620	1.5	M6xØ16	D
3-DM-200	6	240	200	260	180	245	253	32.5	600	2850	1.3	M6xØ16	D
3-DM-220	6	265	220	243	188	275	275	34.5	660	3000	1.2	M8xØ18	D
4-DM-146	8	180	146	260	182	295	303	35	438	2325	2.5	M6xØ16	A
6-DM-76	12	92	76	261	174	221	224	28	228	1440	6	M6xØ16	A



Utility

Golf carts

Golf caddies

Boats

Cleaning

Walkies

Access

Wheel-chairs

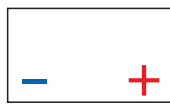
Advanced guided vehicles

Electric cars

Terminal layout



A



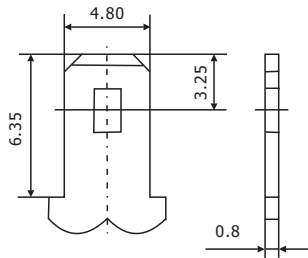
B



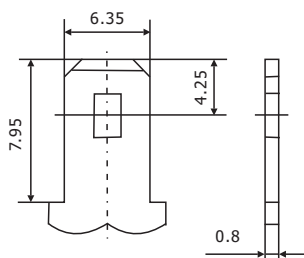
C



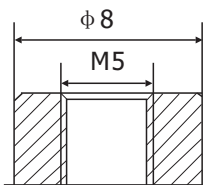
D



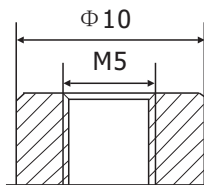
F1



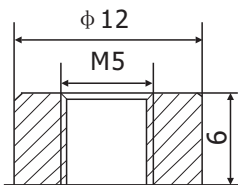
F2



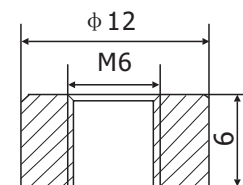
M5 × Φ 8



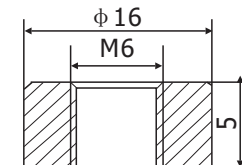
M5 × Φ 10



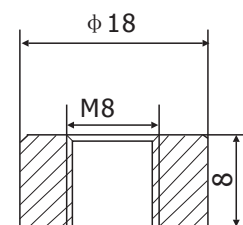
M5 × Φ 12



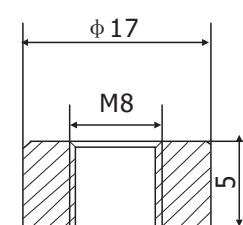
M6 × Φ 12



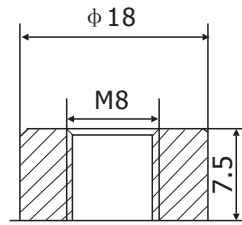
M6 × Φ 16



M8 × Φ 18



M8 × Φ 17



M8 × Φ 18



ISO14000 OHSAS18000 ISO9001 GOST

ABT VRLA Battery:

PowerLine/Thunder/Enduro/Sunwind/E-Trek

ABT World Wide

Our sales growth is due to a complete Global Network with Master distributors and Country managers who apply ABT commercial strategy and through Global Key Account, in Telecom, Power Supply and UPS



Shandong Sacred Sun Power Sources Co. Ltd
Add: 1, Shengyang Road, Qufu 273100 China
Tel: 86-537-4438 666 extn 6028 Fax:86-537-4411 936
Website: www.abtbatt.com www.sacredsun.com
Email: sales@abtbatt.com